

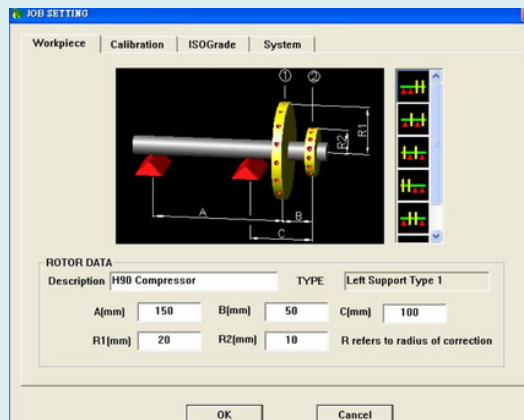


ECU



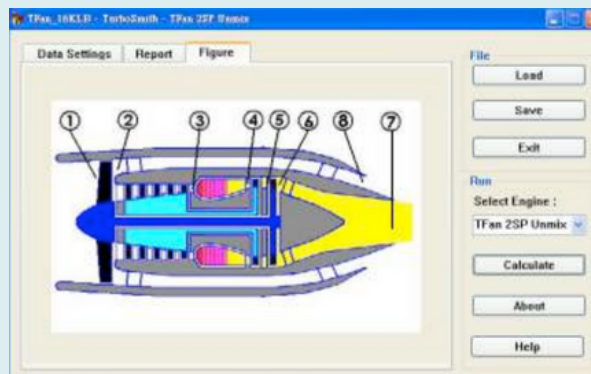
- **Full Authority Digital Engine Control**
- **Most Advanced ECU in its Class**
- **Supports all Jetbeetle Engines**
- **Highly Configurable**
 - **Fuel Ramp**
 - **Control**
 - **RPM and Temperature Limit**
 - **Sensor Calibration**
 - **4 User Definable Profiles**
 - **Throttle Start or Button Start**
- **Ethernet Communications**
- **2 Years of Development and Testing**
- **2x Thermocouples**
- **2x RPM Sensors**
- **4x Ethernet Ports**
- **2x General Purpose Input**
- **2x General Purpose Output**
- **Digital Throttle Input**
- **Pitot Static System**
- **Data Logging (Black Box) 1-10 Hz**
 - **Compatible Microsoft Excel**
 - **CSV Data Format**
- **12V and 24V Models Available**
- **Powerful 10A Electric Pump Driver**
- **Spark, Burner and Glow Ignition**
- **Fuel Flow and Totalizer (Option)**
- **Services:**
 - **Customizable Firmware**
 - **Sensor Integration**
 - **Communications (CANBus, AIRINC-429)**
- **Data Terminal Included**

ARX Dual Plane Dynamic Balance



- **High Accuracy Rotor Balancing**
- **Rotors Between 0.05 kg - 3.0 kg**
- **Includess : PC , DAQ Card , 2 High Prec , Accel , I Phase Sensor , Rotor Jig and Cables**

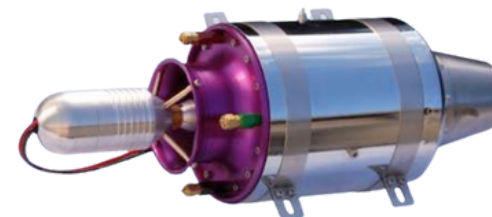
TurboSmith



- **Advanced Gas Turbine Theory**
- **Compute Thrust, Fuel, Pressure, Temp**
- **Ram Drag and Recovery Analysis**
- **5 Engine Types and Design Capab.**

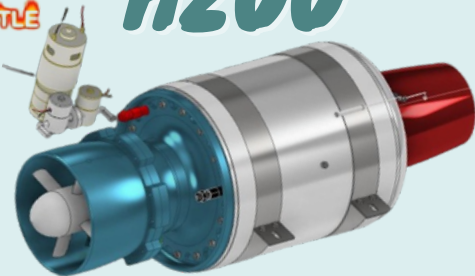
Jetbeetle Propulsion Systems

- **Applications:**
 - **Powered Glider**
 - **Personal Jet Airplanes**
 - **UAV and Target Drone**
- **Gas Turbine Manufacturing and Design**
 - **Compressor, Turbine, Shaft, Stator, and Combustor, Nozzle, Afterburner Design Services**
- **Engine Control Unit Design and Integration**
 - **Custom ECU Firmware**
- **Gas Turbine Balancing and Maintenance**





H200



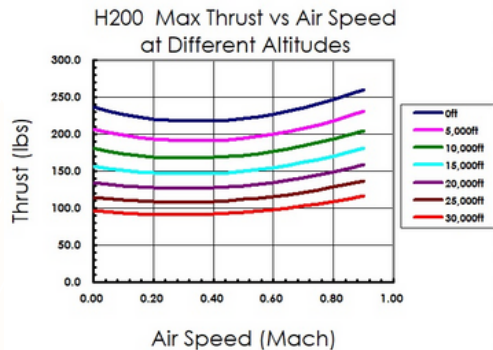
- Turbojet
- Max Thrust : 220 lb / 100 kgf / 980 N (5min rating)
- Max Continuous Thrust : 187 lb / 85 kgf / 830 N
- Engine Weight : 30 lb / 13.6 kg (with starter)
- Max RPM : 75,000 RPM
- Diameter : 8.15 in / 207 mm
- Length : 21.4in / 544 mm
- Pressure Ratio : 6:1
- Bearing Life : 100 hr

*H200C

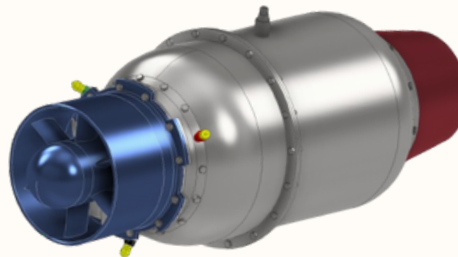
Direct kerosene start 200lbf turbojet engine, with 1000W generator which is direct shaft mounted.

NOTE :

1. Using two Stages Compressor 1A +1C in our design !
2. Engine weight reflects higher safety factor being used in our design !



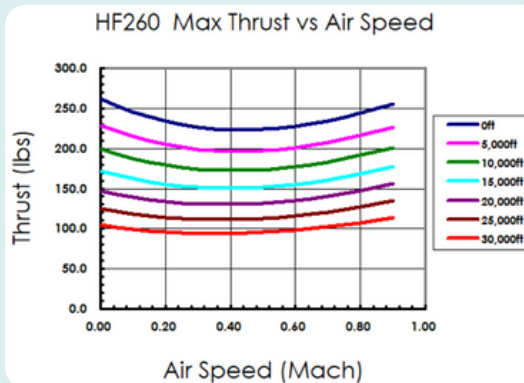
HF260



- Turbofan
- Max Thrust : 262 lb / 119 kgf (5min rating)
- Max Continuous Thrust : 220 lb / 100 kgf
- Engine Weight : 50 lb / 23kg (with starter)
- Max RPM : 68,000 RPM
- Diameter : 9.1 in / 231 mm
- Length : 26.2 in / 665 mm
- Pressure Ratio : 6:1
- Bearing Life : 100 hr
- Bypass ratio : low

*HF260

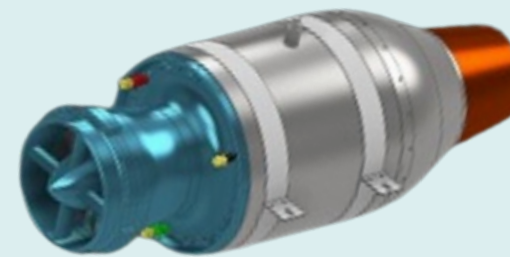
Direct kerosene start Turbofan engine, with 1000W generator which is direct shaft mounted.



NOTE :

1. The world's smallest turbofan engine !
2. Corrugated internal mixer for exhaust noise suppression !
3. It has turbojet's high speed performance yet has better fuel burn !

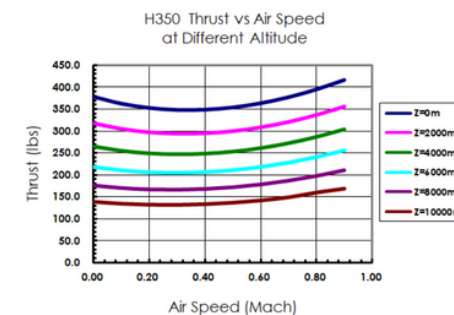
H350



- Turbojet
- Max Thrust : 378 lb / 171 kgf (5min rating)
- Max Continuous Thrust : 330 lb / 150 kgf
- Engine Weight : 60 lb / 27kg (with starter)
- Max RPM : 58,000 RPM
- Diameter : 9.84 in / 250 mm
- Length : 27.6 in / 700 mm
- Pressure Ratio : 6:1
- Bearing Life : 100 hr

*H350C

Direct kerosene start turbojet engine, with 1000W generator which is direct shaft mounted.



NOTE :

1. Using two Stages Compressor 1A +1C in our design !
2. We have special bearing cooling technology hence bearing life is 100-500 hours depending on the severity of your application.
3. Engine weight reflects higher safety factor being used in our design !